

Injectidry

- **Used to dry structure by forcing air into, or pulling air out of wet building materials**
- **In-line HEPA filter allows Injectidry to be used in mold mitigation work.**



SERVPRO®

Injectidry Used on Wall Cabinets



Vac-It Panels

Used on Hardwood Floor

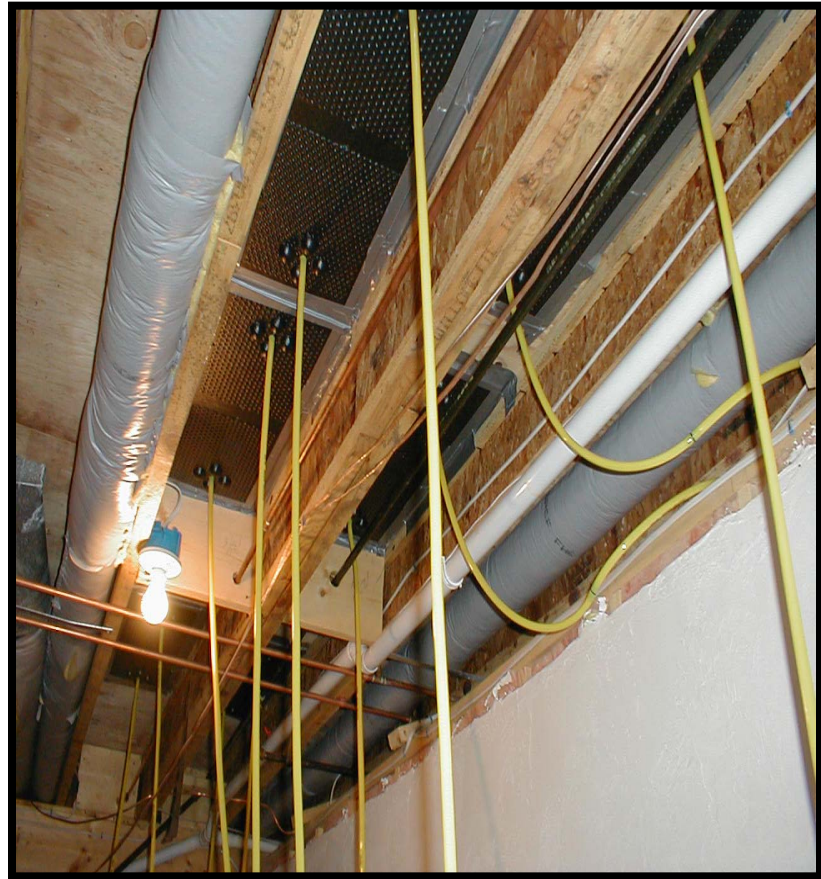
- Panels placed directly over the saturated material to negatively or positively pressurize a saturated surface or cavity.
 - Used to dry hardwood and tile floors.





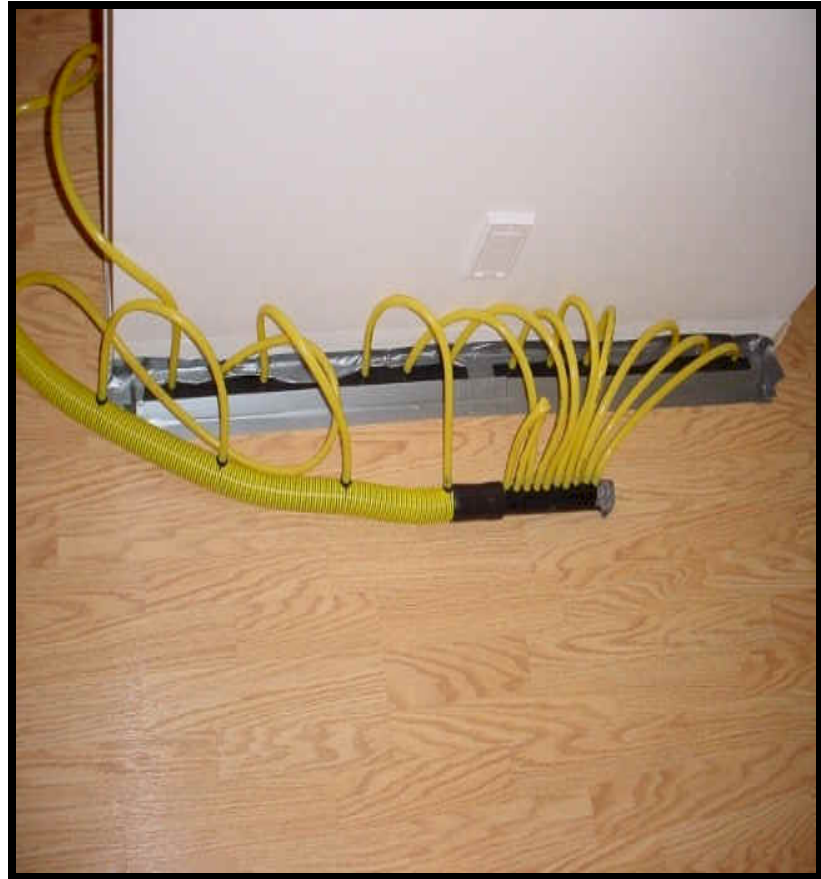
Vac-It Panels

Used on Granite Floor



Injectidry

Used on Inlaid Floors



Benefits of Using Injectidry

- **Saves wet surfaces otherwise unsalvageable.**
- **Limited air movers needed, 1 Injectidry can dry an entire room.**
- **Can be used to extract air from moldy wall cavities.**
- **Limited remodeling necessary to patch 3/16” holes.**